



# M/V DAMAS SKY

ANCHOR HANDLING / TUG / SUPPLY

## Characteristics

Vessel Type	AHTS (Anchor Handling/ Tug / Supply Vessel)
Hull No.	493
Year of Built	1973
Builder	Buton Ship Yard
Place of Built	USA
Rebuilt	Fully New Structure Build with Along with Newly Designed Wheel House and Re-Fitted With New Latest Technology In Equipment And Machineries. Delivered Dec.2016
Flag	Nigeria
Port Of Registry	Lagos
Operator	Damas
Call Sign	5nyu3
Class	ABS + A1, AMS
Imo No.	7228405

## Dimensions

Length Overall	56.04 M
Breadth	12.2 M
Max. Draft	4.5m
Gross Tonnage	487.00 Tons
Net Tonnage	203.00 Tons
Summer Draft	3.90 Tons
Light Draft	2.3 M

## Machinery

Main Engine	2 X EMD Modified 16 CYL 3600 BHP
Propellers	2 Fixed Pitch
Bow Thruster	1 X 400 BHP Driven by Detroit Diesel
Generators	2 X ABS certified Caterpillar C9 269BKW (361 BHP)
	1 x 50 KVA Emergency Harbor
Steering System	2 x Electro /Hyd Comepensate System
Avg. Speed	10 Knots

## Deck Space / Tank Capacity

Deck Space	29.10m X 9.30 M (284 M2)
Deck Cargo	500 Tons
Deck Strength	1.8 Tons/M2
Fuel Oil	210 Tons
Fresh Water	270 Tons

## Total Accommodation 21

Vessel Crew Cabin	11
Visitors / Passenger	10

## Mess and Recreation Room

Galley Facilities Equipped to Serve Up To 35 Passengers

## Cold Stores

Walk in Chiller	300 Cu. Ft
Walk in Freezer	300 Cu. Ft

## Air Handling Unit

1 x10 Ton Carrier (Central Unit)

## Towing Anchoring / Winch

Make	Smatco
Model	Daw 66 / Waterfall System
Bollard Pull	40tons.
Drum Capacity	2550 Ft X 55 Mm Dia
Shark Jaw and Towing Pins	200 Tons ABS Certified Driven by HPU
Tugger Winch	2 x7.5 Tons
Anchor	2 Stockless Anchor (Port/Stbd)

## Discharging Capacity

Fuel Oil	80 M3 / Hour
Portable Water	80- M3 / Hour



# M/V DAMAS SKY

ANCHOR HANDLING / TUG / SUPPLY VESSEL

## Navigation / Communications

2 X Sailor GMDSS RT6222 VHF Base Unit  
1 X Sailor GMDSS 5000 Series MF/HF Unit  
1 X Inmarsat C Thrane and Thrane  
2 X Furuno GPS (AFT&FWD)  
1 X Furuno GMDSS Navtex Receiver NX700 Series

2 X ARC Sart Pathfinder 3 (Port & Stbd)  
1 X Furuno Felcom 16 SSAS  
1 X Jotron Tron 40s MK2 EPIRB  
1 X Consilium ECDIS Split Version  
1 X Kodon X-Band MDC2900P Radar  
1 X Kodon X-Band MDC1540P Radar  
1 X Lilly & Jelly MK2000 Magnetic Compass  
1 X Sperry Navi pilot 4000 Auto Pilot System  
1 X Sperry Navigate X MK2 Gyrocompass  
1 X Furuno BR500 BNWAS  
2 X Furuno LH3000 Loudhailer with Intercom  
(FWD & AFT CONSOL)

1 X Jutron CIS3130 Talk Back System  
1 X MRC LC800 Battery less Telephone System  
Integrated With 6 Contact Points

1 X Furuno FA150 AIS System  
1 X Walker Wind Speed and Direction System

1 X Jotron SR8200 Sound Reception System  
C/W 5 X SR8201 Microphone Systems

1 X Furuno SD80 Speed Log System  
1 X Furuno FE700 Echo Sounder Unit  
1 X Consilium Salwico Integrated Fire & General Alarm  
System for All Vessel Compartments

1 X Thrane and Thrane FB250 SAT Communication  
System

## Safety Equipment

2 X Viking 25DK+EU" A" Life Raft 25m Each

8 X 2.5 Kg Lifebuoy MED Approved C/W SOLAS/MED  
Approved Lights

4 X Comet Line Throwing Devices With 250MTR Single Line  
Shot

43 X SOLAS Rigid X-Concept Life Jackets C/W SOLAS, MED  
and USCG Lights and Immersion

2 X Ship Package, ALU, W/Bullard Helmet  
8 X Portable Fire Extinguishers Co2 5kg ea  
13 X Portable Fire Extinguishers, ABC Dry Powder 5kg ea

2 X Portable Fire Extinguishers, AFF Foam 9-Ltr ea  
2 X Breathing Apparatus "Full Set" C/W 2 X Spare Cylinders

4 X Oceno M-20.2 SOLAS—EC Approved Emergency Escape  
Breathing Device

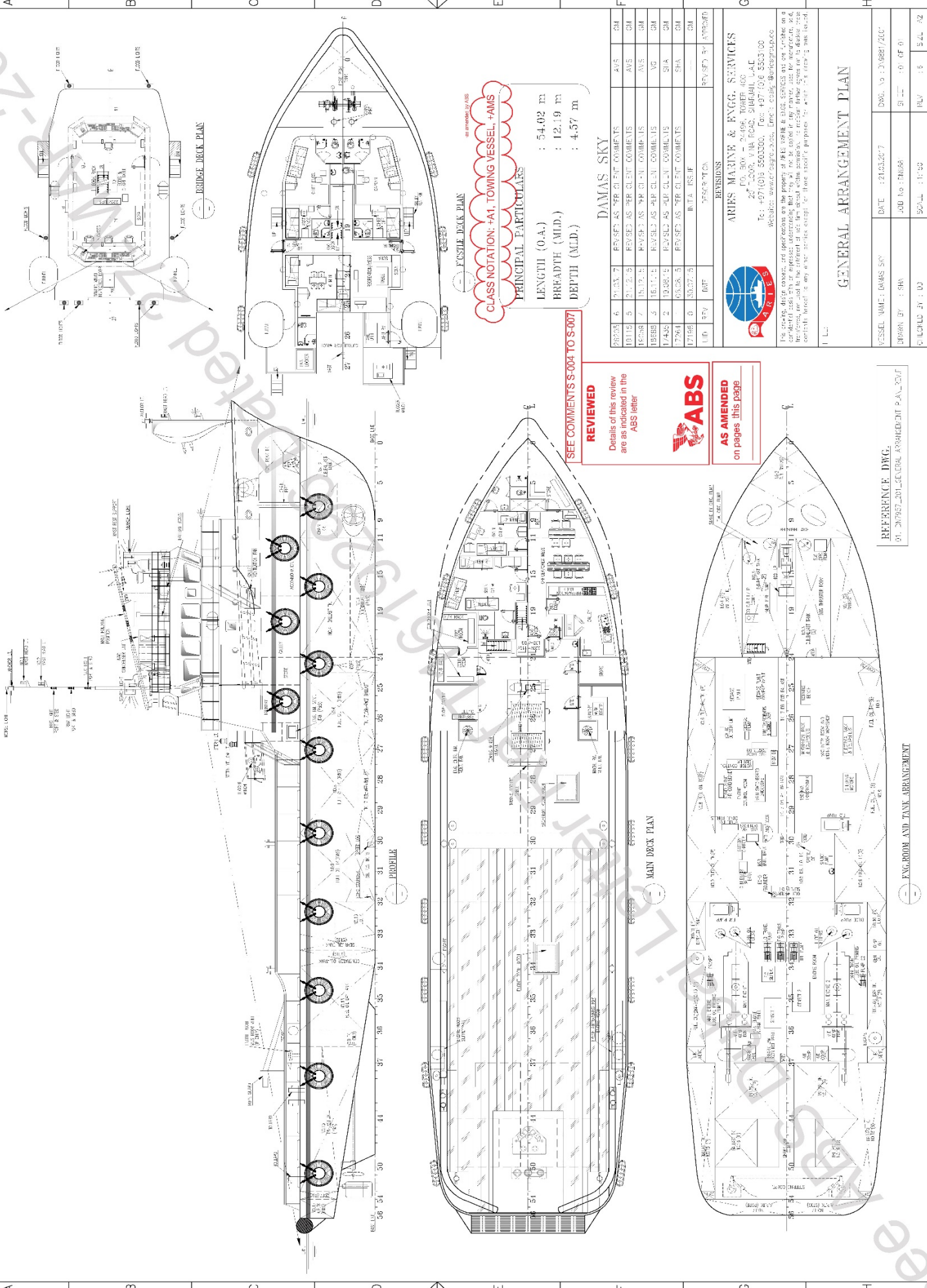
1 X Thermal Protective AID MK JV and USCG  
1 X 1100 Ltr Capacity Sopep Box  
1 X 50 Person Capacity First AID Box

## Damas Oil & Marine Services Limited

IMO (ISM) Code Compliant  
Km 17, PH/Aba Expressway, Port Harcourt, Rivers State - Nigeria  
Tel No.: +234-07064070853 & 07064070854  
FAX: +234-07064070856  
Website: [www.damasmarine.com](http://www.damasmarine.com)  
E-mail: [info@damasmarine.com](mailto:info@damasmarine.com)



# GENERAL ARRANGEMENT PLAN - DAMAS SKY



**CLASS NOTATION: +A1, TOWING VESSEL, +AMS**

**PRINCIPAL PARTICULARS**

LENGTH (O.A.) : 54.02 m  
 BREADTH (M.L.D.) : 12.19 m  
 DEPTH (M.L.D.) : 4.57 m

SEE COMMENTS S-004 TO S-007

**REVIEWED**  
 Details of this review are as indicated in the ABS letter



**AS AMENDED**  
 on pages this page

**DAMAS SKY**

26553	6	21.03.7	REVISED AS PER CLIENT COMMENTS	AVS	GM
19115	5	21.12.5	REVISED AS PER CLIENT COMMENTS	AVS	GM
18538	7	16.12.5	REVISED AS PER CLIENT COMMENTS	AVS	GM
19388	3	18.11.4	REVISED AS PER CLIENT COMMENTS	AVS	GM
17433	2	19.08.1	REVISED AS PER CLIENT COMMENTS	SIA	GM
17561	1	05.08.5	REVISED AS PER CLIENT COMMENTS	SHA	GM
17196	0	30.07.5	INTA ISSUED		GM
110	0	00.0	ISSUANCE		GM



**ARIS MARINE & ENGG. SERVICES**  
 PO. BOX 24499, TOWER 400  
 28<sup>th</sup> FLOOR, VIBRA ROAD, SIMPANGI, L.A.C.  
 Tel: +67 (0)3 5500300, Fax: +67 (0)3 5503100  
 Website: www.arismarine.com, Email: ccsk@arismarine.com

The drawings, design concepts and specifications are the property of ARIS MARINE & ENGG. SERVICES and are created on a confidential basis. They are reproduced here for your information only. No part of this document may be reproduced, stored in a retrieval system, or transmitted in any form or by any means, electronic, mechanical, photocopying, recording, or by any information storage and retrieval system, without the prior written permission of ARIS MARINE & ENGG. SERVICES.

## GENERAL ARRANGEMENT PLAN

VESSEL NAME: DAMAS SKY	DATE: 21.03.2017	DWG. NO.: 316887/2017
DRAWN BY: SHG	JOB NO.: 116887	SHEET NO.: 01 OF 01
CHECKED BY: DD	SCALE: 1:100	REV. NO.: 0

REFERENCE DWG.  
 01\_207937\_2017\_GENERAL ARRANGEMENT PLAN\_2017

## ENG. ROOM AND TANK ARRANGEMENT