

# BARADA I

## DECK CARGO BARGE

### Characteristics

Vessel Type	Deck Cargo Barge
Official Number	10620
Flag	Nigeria
Port of Registration	Lagos
Class	ABS (Class No. 8004856)
Class Notations	+A1, Barge
Builder	Teledyne Movable Offshore
Built	1980

### Dimensions

GT	1689
NT	506
Length	64.37 m (211.2 Ft.)
Breadth	21.95 m (72 Ft.)
Depth	4.57m (15 Ft.)

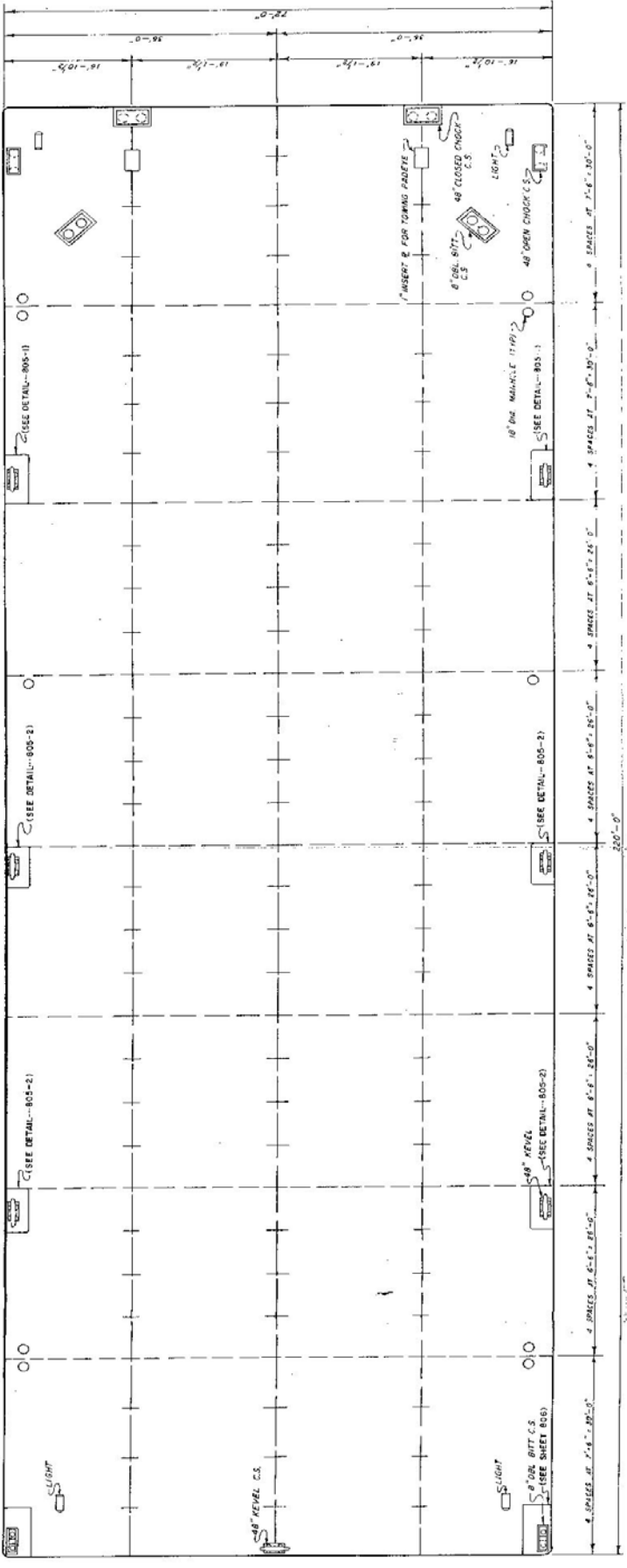
**Capacity** Deck Cargo ST / MT 1,000 / 907

**General Characteristics** Navigation Lights Port, Starboards and Stern



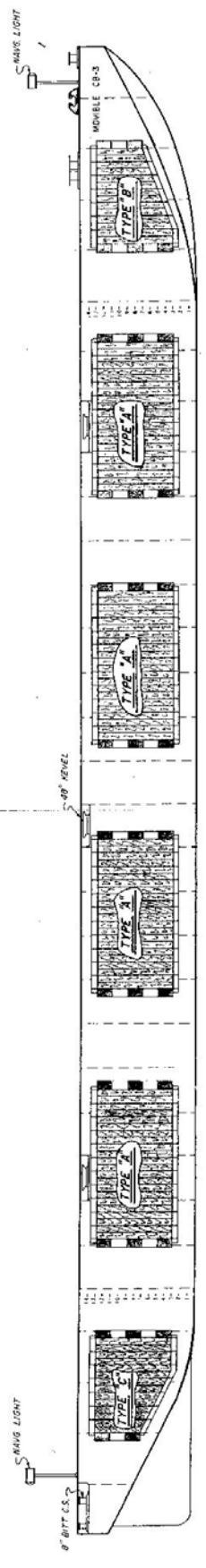
### **Damas Oil & Marine Services Limited**

IMO (ISM) Code Compliant  
 Km 17, PH/Aba Expressway, Port Harcourt, Rivers State - Nigeria  
 Tel No.: +234-07064070853 & 07064070854  
 FAX: +234-07064070856  
 Website: [www.damasgroupe.com](http://www.damasgroupe.com)  
 E-mail: [info@damasgroupe.com](mailto:info@damasgroupe.com)



**DECK ARRANGEMENT**

SCALE: 1/8" = 1'-0"



**OUTBOARD PROFILE**

SCALE: 1/8" = 1'-0"

APPROVED  
29 JUL 1977  
G.S. SPOU  
BY EXCISE



FILE NO. 159-244

TELEDYNE MOVIBLE OFFSHORE INC.		CB-3 CARGO BARGE	
A COMPLETE OFFSHORE SERVICE FABRICATION-CONSTRUCTION DRILLING-WORKOVER		REGISTRATION MOVIBLE OFFSHORE	
DESIGNED BY	ENGINEERING CHECK	PROJECT NO.	FILE NO.
T. DOLLETT	G.S. SPOU	159-244 E-3	001
SCALE	APPROVED BY	DATE	ACT. 172
4-22-77	G.S. SPOU		
NOTED	4-22-77	CHECK & OUTBOARD ARRANGEMENT	

REVISIONS	DATE	BY	REVISION
1	4-22-77	T. DOLLETT	REVISED "OUTBOARD ARRANGEMENT" TO SHOW 8" DIA. BITT C.S. PERMANENT TO "SCALE AND RETIRE"
2	4-22-77	T. DOLLETT	REVISED "OUTBOARD ARRANGEMENT" TO SHOW 8" DIA. BITT C.S. PERMANENT TO "SCALE AND RETIRE"